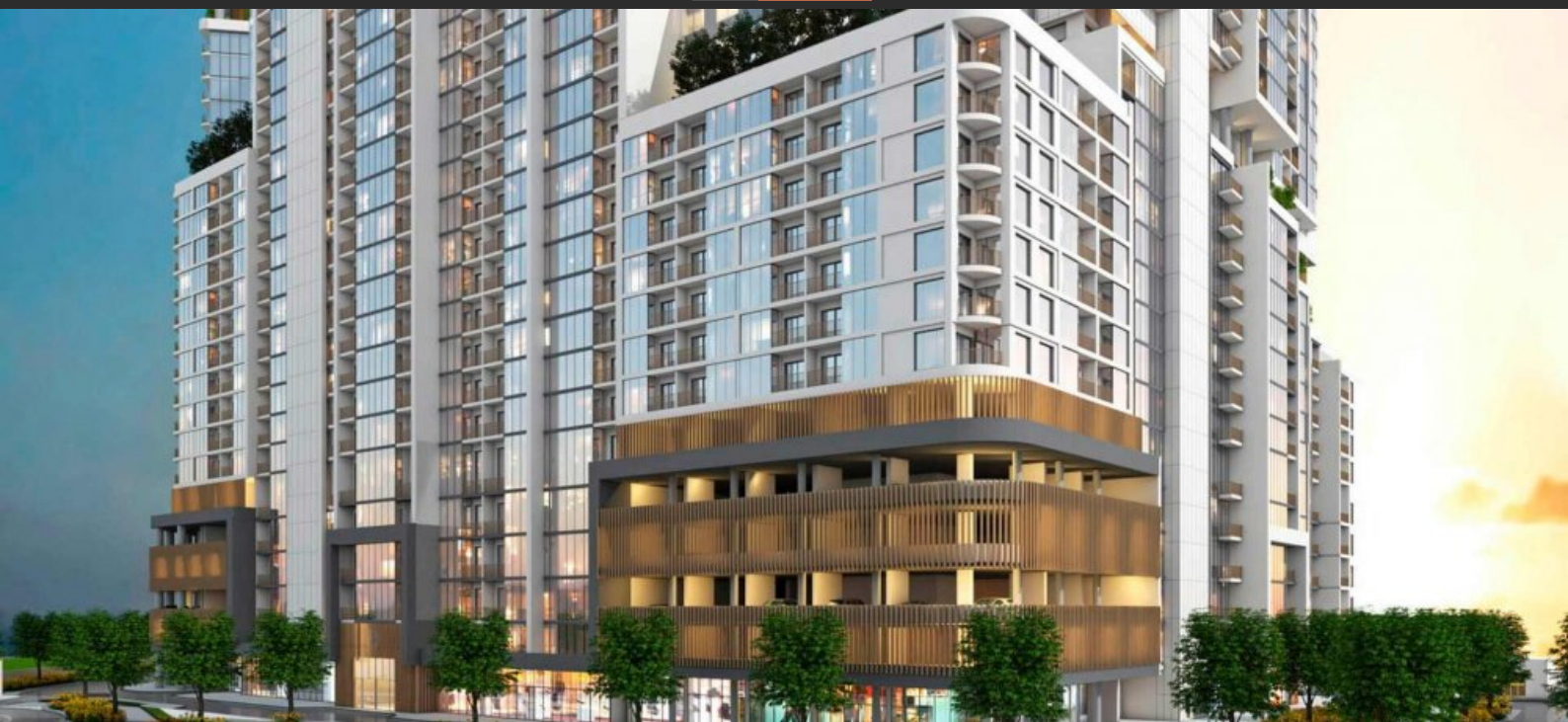




DUBAI  
CRYPTO



## APARTMENT 1 BEDROOM IN THE CREST GRANDE, SOBHA HARTLAND (4752)

**BTC 8.433**

### PARAMETERS

City	Dubai
Type	Apartment
Development	THE CREST GRANDE
Floor plan	Floor plan «A», 1 bedroom, in THE CREST GRANDE
Living space	100 m <sup>2</sup>
To sea	13700 m
To city center	13300 m
Completion date	III quarter, 2025



## PROPERTY FEATURES

### LOCATION

- Close to schools
- Close to the kindergarten
- Prestigious district
- Near the golf course
- Great location
- City view
- Panoramic view
- Street view
- Beautiful view

### FEATURES

- Panoramic windows
- Panoramic glazing
- Balcony
- Dressing room
- Built-in closet
- Finished
- Good quality
- Premium class
- New development project
- New project
- Tap water
- Electricity
- Driveway to the land plot

### INDOOR FACILITIES

- Children's playroom
- Child-friendly
- Restaurant
- Recreation area
- Sauna
- Fitness room
- Pilates and yoga room
- Elevator
- Covered parking

### OUTDOOR FEATURES

- Barbecue area
- CCTV
- Children's playground
- Children's pool
- Landscaped garden
- Landscaped green area
- Social and commercial facilities
- Car park
- Swimming pool
- Shop
- Supermarket

## PHOTO GALLERY

